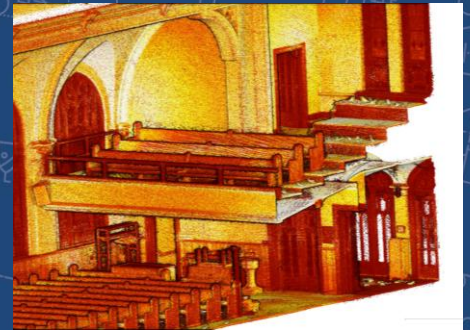
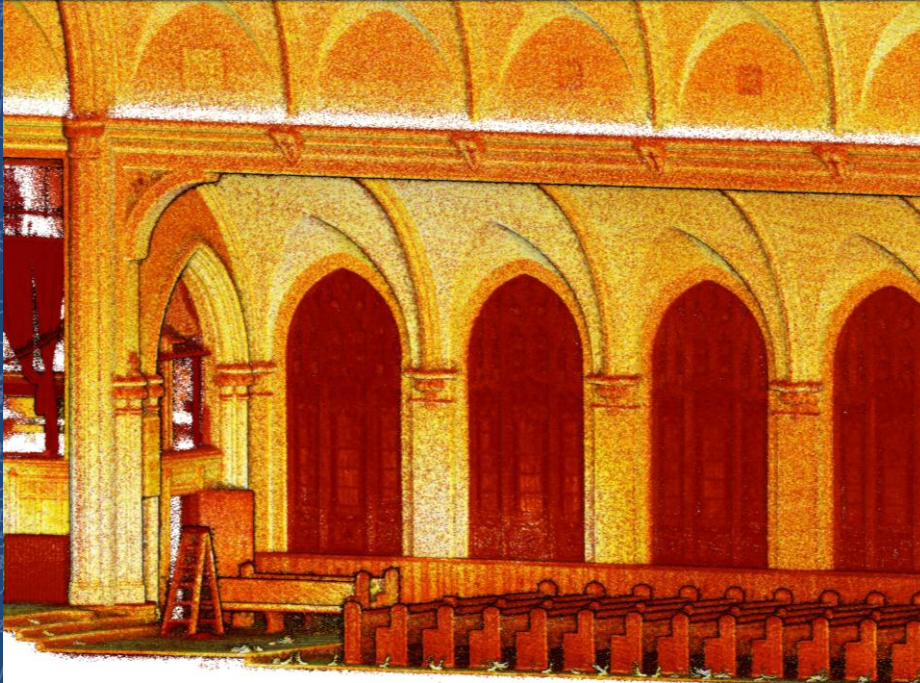


West Chew Street Church Scan

City of Allentown | Lehigh County, PA



Van Cleef was contracted by Spillman Farmer Architects for LIDAR and Scanning. LiDAR scanner, Matterport camera, and drone was used to help Spillman Farmer document and measure their project space, a historic church building that is being converted to a community center. The LiDAR scanner enabled a safer measurement method of the intricate ceiling features of the church without the need for ladders or scaffolding, and was used to build the Revit model that will be utilized throughout the project lifecycle. The accompanying Matterport space documents the condition of the site at various stages of the project, and can be shared with stakeholders to effectively coordinate and add spatial context when needed. Finally, drone images and video documented various areas where repairs will be made to address roof leaks as part of the broader building conversion.

CLIENT CONTACT

Spillman Farmer Architects
Bethlehem, PA

PROJECT HIGHLIGHTS

- Architectural Client
- Lidar
- Scanning
- Historic Property