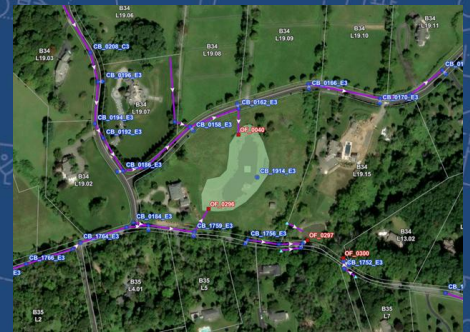
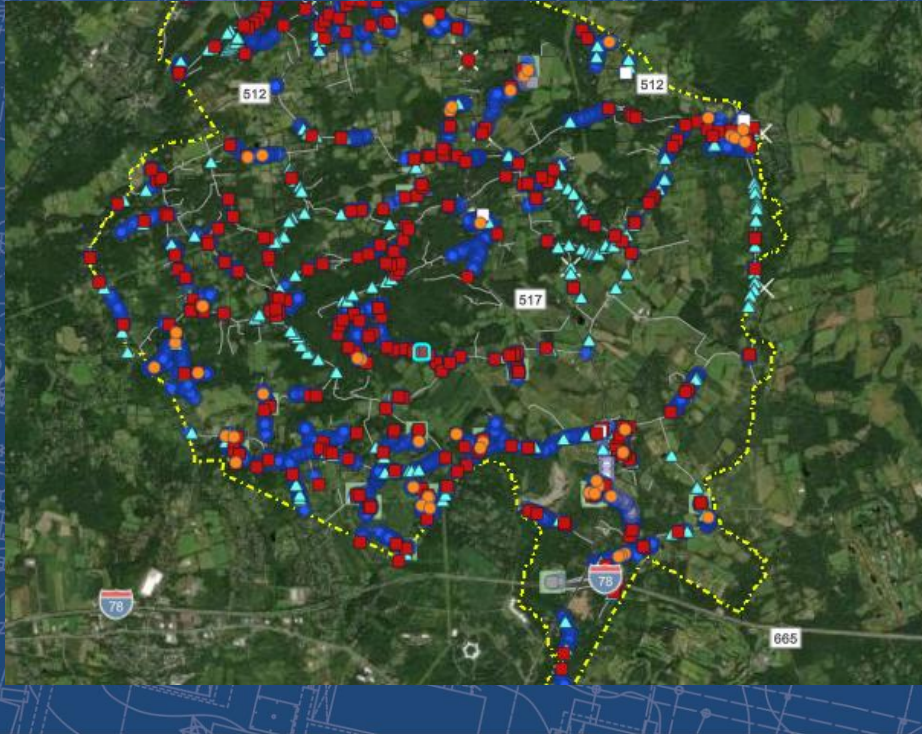


Tewksbury Township MS4 Stormwater Asset Management

Township of Tewksbury | Hunterdon County, NJ



Van Cleef was contracted by Tewksbury Township to provide MS4 Stormwater Mapping for the Township. Using Esri ArcGIS Online and ArcPro, Van Cleef completed the entire mapping inventory for Tewksbury Township in 2024. This includes locating and inspecting all stormwater features in the Municipality including but not limited to: 1524 Inlets, 49 Manholes, 332 Outfalls, 429 Culverts, 25 Stormwater Basins, Green Infrastructure, Pump Stations, 1965 Pipelines, etc. Van Cleef built an interactive web map application to give Tewksbury Township access to the best technology in asset management which will allow their team to work efficiently and effectively. In addition to the interactive web map application, an interactive dashboard was created to give the Public Works Department the ability to monitor changes in their system, as well as visualize data driven decisions.

CLIENT CONTACT

Tewksbury Township
Public Works

PROJECT HIGHLIGHTS

- Infrastructure Asset Management
- Sub-Centimeter Accuracy
- System Modeling
- NJDEP MS4 Compliance
- Field Inspections
- Interactive Web Map Application
- Live-Data Dashboards