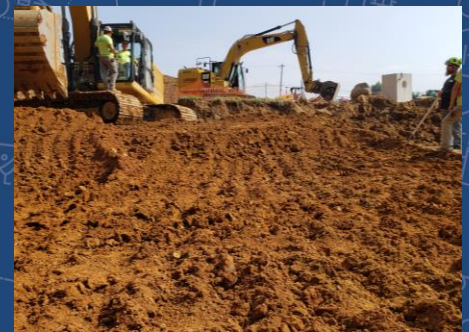


Falmer Drive Garden Apartments

Township of Bethlehem | Northampton County, PA



Van Cleef was contracted for site design and land development services for a three-story garden apartment development that thoughtfully balances accessibility and privacy on a two-acre site in Bethlehem Township. The project included enhanced access driveways, streetscape improvements, on-site parking, landscaping and property screening, utility installations, and an innovatively designed subsurface stormwater management system that minimized site disturbance and preserved existing wooded areas. Designed in compliance with the Commercial Enhancement Overlay District and Streetscape Enhancement Overlay District requirements, the project advances local planning objectives while delivering a high-quality residential environment.

CLIENT CONTACT

Lehigh Valley Underground
Easton, PA

PROJECT HIGHLIGHTS

- Land Development
- Site Layout
- Streetscape Improvements
- Stormwater Management